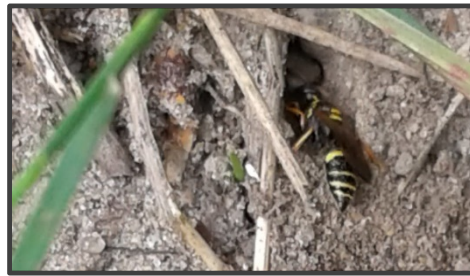


Episode 3 of the Life of the Clyde Bee and Butterfly Patch: “Pollinators We Might See”

- ❖ Bees are not the only pollinators! Hummingbirds, some flies, wasps, skippers, moths and beetles also pollinate plants, as well as some butterflies, but most butterflies are more interested in the nectar and tend to bypass the pollen.
- ❖ Aside from the honeybees and bumble bees we are used to seeing, there are also mining bees, cellophane or plasterer bees, sweat bees, leaf-cutter bees, mason bees and many more!
- ❖ Predatory insects like the humpback beewolf and robber flies, and plant eating bugs like the obscure plant bug, are also checking out the Patch. Not every insect found on the plants will be looking for pollen. Some may be looking to snack on a pollinator or two!
- ❖ The pollinator population in the Patch is still quite modest but we’re now seeing more bees, wasps and flies visiting the Anise Hyssop, the Goldenrod, the Shrubby Cinquefoil and the Yarrow, among other native plants planted here. These photos are from the Patch.



A hoverfly



A humpback beewolf digging a nest



A common thread-waisted wasp

For information about the Patch, contact cccpollinator@gmail.com (Photos: Nora Lee)